



VOLUNTARY PROTECTION PROGRAMS



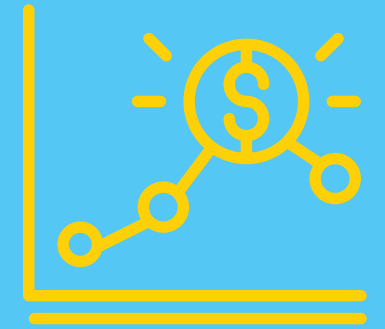
WHAT IS VPP?

A safety and health management system that prevents workplace accidents and fatalities, while reducing medical, time-off, litigation and mitigation costs.

- **Affects 1 million+ workers**
- **2,200+ worksites**



GOOD BUSINESS



VPP establishes sound safety and health practices that are both socially responsible and good business.

- **Positive public image**
- **Regulation compliance**
- **Cost savings**
- **Employee satisfaction**



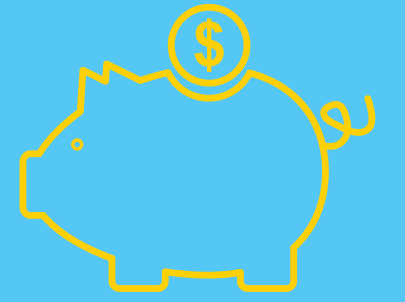
FUNDING

Spent

- **\$3.7 million private sector**
- **\$3.5 million public**

Saved

- **\$300 million private sector**
- **\$59 federal**



FEDERAL/STATE USE

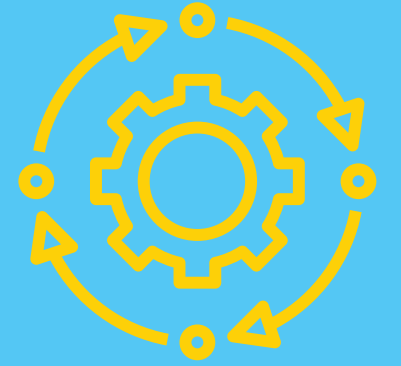


DoD has 62 VPP sites that average:

- **40% reduction in civilian lost time**
- **Saved \$149M**
- **69% reduction in incidence rates**
- **62% reduction in lost day rates**



SAFETY MANAGEMENT & HEALTH SYSTEM

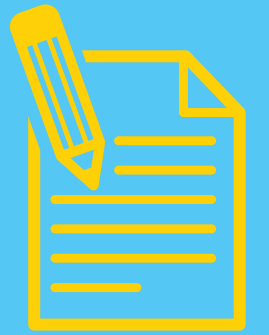


VPP is based on dedication to four main elements:

- **Management Leadership and Employee Involvement**
- **Worksite Analysis**
- **Hazard Prevention and Control**
- **Safety and Health Training**



APPLICATION



Elements of the Application

- **General Information**
- **Employee Support for VPP Participation**
- **Assurances**
- **VPP Safety & Health Management System**



PREPARING FOR THE EVALUATION



OSHA VPP Evaluation Worksheet

Rehearse presentations

Documents for review organized and properly labeled

Review potential questions with workers

Room for the evaluation team and for formal interviews



ONSITE EVALUATION



Day 1: Introductions, presentations, walk-through

Day 2: Documentation review, interview schedule

Day 3: Interviews, comprehensive walk-through

Day 4/5: Formal briefing, recommendations



AFTER THE EVALUATION



Report submission

Onsite report submission

Site notification



MAINTAINING STATUS

Annual submission

Annual report

Onsite visit every 3 to 5 years



GETTING STARTED



Become a VPPPA member worksite

Attend Safety+Symposium

Form an active group of employee leaders

Allocate proper time to work on safety and health

